

A woman is the central figure, wearing a long, flowing, gold-embroidered lace gown with a sheer capelet. She is also wearing a large, elaborate headpiece made of white and gold flowers, greenery, and feathers. The background is a bright, minimalist setting with soft shadows.

4TH ANNUAL  
**BLACK TIE  
CHANDELIER  
GALA**  
2017

PRESENTED BY  
**Creative Urban Living**

FEATURING  
JOAN MADISON

DESIGNERS  
Juan José Saenz-Ferreyros  
Sika Imne | Esther Sands  
Jasmine Burton

**OWN IT**  
A Tribute to Fashion

**B**  
MAGAZINE

# Bea Foster

FASHION DIRECTOR  
FASHION SHOW PRODUCER

**B**ea Foster, Allied ASID, has had a long career in fashion and design. She decorated homes across the U.S. for 35 years as an interior designer. After Founding Bea's Design and Fashion Center, she established its reputation as a virtual design wonderland. For 25 years, Foster coordinated the Central Ohio show of the Ebony Fashion Fair - the world's largest traveling fashion show. As chair of the non-profit group, TWIG 110, the group raised over \$350,000 for Nationwide Children's Hospital.

Now Foster's work is centered on giving back. She formed Beau Beautiful Inc, a non-profit 501c3 and organized The Chandelier Gala as the first annual fashion show benefit. A portion of the proceeds will benefit The James Cancer Hospital and Solove Research Institute.

If you have any questions about the Black Tie Chandelier Gala, or if you would like to join our team and become part of our yearly events calendar please contact our President, Bea Foster.

Finally, to our Guest, Friends, Family, Daughter Barbie Bush, Daughter Tina Blackwell, Helping Hands, Volunteers, Prayer Partners, regardless of the roll you played. I am so delighted and grateful to have you here with us. Your attendance support and your love means more to me than you will ever know. Without you we could no do what we do. Thank you all for your continued support and love. Special Thanks to my Twig 110 Sisters and to my Junior Leaguers Sisters.

May God continue to bless and watch over you until we meet again.

God Loves You And So  
Do I,  
*Bea Foster*

**Together we can help find a  
cure in this life time, for  
these two dreadful  
diseases**

**Cancer and Sickle Cell**



ON THE COVER:  
MODEL: Akiyah West  
DESIGNER: Joan Madison  
PHOTO CREDIT: OneKreate



# The Event

**“You make giving back special. Because of you we can do what we do. Working together, I know we can find a cure in this life time for these dreadful diseases, cancer and sickle cell. How do I say Thank You?”**

**From the bottom of my heart, Thank you.”  
- Bea Foster**

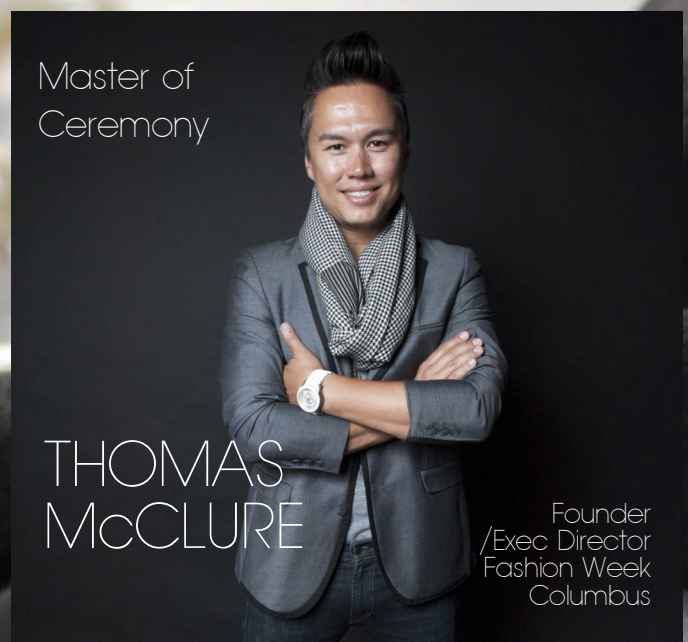
## CRYSTAL BALL - BEHIND THE SCENES COORDINATOR

Crystal Ball is a Chicago native living in Las Vegas. She is the brilliant mind behind “*SoCrystal Designs*.” *SoCrystal Designs* are the creative *fashion forward* line of free-sized, free-flowing, organic works of art that naturally contour to fit every woman. *SoCrystal Designs* combine simple elegance that can be worn from the beach to the boardroom with no boundaries when it comes to age or Size. They are truly designed for every woman. No zippers! No buttons! No darts! *SoCrystal Designs* will take your look from casual chic to evening sophisticate.

Crystal started designing clothes in 2002 and was inspired to create her signature style after living in Bermuda for five years. She has always loved fashion and the form of a woman's body. She loves to see a woman look sexy and sophisticated without showing everything.

As a young woman, Crystal had a desire to design but she chose to suppress her inclination and pursue a career as a fashion model. As a result, she spent endless hours re-designing almost everything that she wore and people would constantly ask her where they could buy her look. The more she created, the more people urged her to design. She then took the necessary steps to explore her fashion desire.

CONTINUED ON NEXT PAGE ►



# THE DES

JOAN MADISON



JUAN JOSE  
SAENZ-FERREVIROS



## CRYSTAL BALL

CONTINUED FROM PREVIOUS PAGE

Crystal Ball is truly a unique style personified and has a personality that is just as vibrant as her clothes! Crystal's main ingredient in all she does is "laughter". She has to have a deep belly laugh once a day! She is truly a force to be reckoned with and the best part is she is a fun person to be around! Her motto is *"if it ain't fun....don't do it!"*

### Pella Windows & Doors

Ohio Division

9009 Gemini Parkway

Columbus, OH 43240

Phone: 614-890-2000

800-695-0362

Cell: 614-902-0216

Fax: 614-898-1300

Email: [joe\\_youngs@gunton.com](mailto:joe_youngs@gunton.com)

### Joe Youngs

Replacement

Sales Specialist



VIEWED TO BE THE BEST  
[www.guntonpella.com](http://www.guntonpella.com)

# IGNERS



ESTHER SANDS



JASMINE BURTON



SIKA INME

**D**  
**DISTINCT**  
EVENT PLANNING



P.O. Box 175 Blacklick, Ohio (614) 577-1844

**BEA FOSTER**  
INTERIOR DESIGNER ALLED MEMBER ASD

CUSTOM DRAPERIES  
ONE OF A KIND BED ENSEMBLES  
DESIGNER CARPETS  
IN HOME CONSULTATIONS



OUR EXCLUSIVE TEAM OF DESIGNERS WILL CUSTOM DESIGN FOR YOUR PERSONAL NEEDS. WE ALSO ACCOMMODATE OUR CLIENTELE BY CUSTOMIZING OUR BEDDING AND ACCESSORIES TO SUITE YOUR SPECIAL REQUIREMENTS.

STYLE AND ELEGANCE FOR THE HOME  
[www.beabeautifulhomes.com](http://www.beabeautifulhomes.com)   
614.476.1742

SPECIAL THANKS TO



EASTON GATEWAY  
3940 STELZER RD, COLUMBUS, OH 43219

4TH ANNUAL BLACK TIE CHANDELIER GALA

Have your business  
**stand out** from  
the crowd!



WEBSITES, BUSINESS CARDS, BANNERS, FLYERS, BROCHURES,  
POSTERS, FLYERS, MAGAZINE LAYOUTS, LOGOS and so much more!

**DPI GRAPHIC DESIGN**

www.dpigraphicdesign 614.622.7599

**"Because first impression means everything!"**

WE ARE GRATEFUL AND GIVE SPECIAL THANKS TO BEA FOSTER FOR  
ALLOWING US THE OPPORTUNITY TO DESIGN THIS YEAR'S PROGRAM BOOKLET!



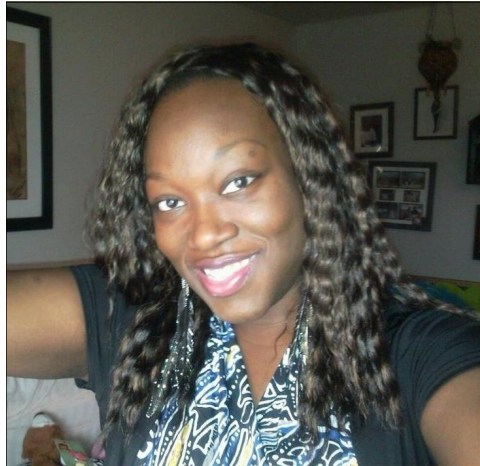
HERE IS A LIST OF PEOPLE , BUSINESSES  
AND ORGANIZATIONS THAT  
JOINED TO BECOME A PART OF  
THIS WONDERFUL EVENT.

- MARY ANN ANDERSON
- HUNTINGTON BANK
- TEDDY MARTIN - ENTERTAINMENT
- GIANT EAGLE
- FIRST MERCHANT BANK
- MACY'S - EASTON TOWN CENTER
- THE JAMES CANCER HOSPITAL AND SOLOVE
- RESEARCH INSTITUTE
- INSKEEP PRINTERS
- COLUMBUS MONTHLY MAGAZINE
- NORSTROM - EASTON TOWN CENTER
- BLUEMERCURY - EASTON TOWN CENTER
- KEIHL'S - EASTON TOWN CENTER
- JOAN'S BRIDAL COUTURE
- OFFICE MAX - EASTON
- DISTINCT EVENT PLANNING
- DPI GRAPHIC DESIGN
- MO ENTERTAINMENT EVENT PLANNING & EVENTS
- INDELIBLE AFFAIRS
- SAKS OFF FIFTH - EASTON GATEWAY
- VILLA MILANO BANQUET AND CONFERENCE CENTER
- CHARLES PENZONE

# Gone But Not Forgotten



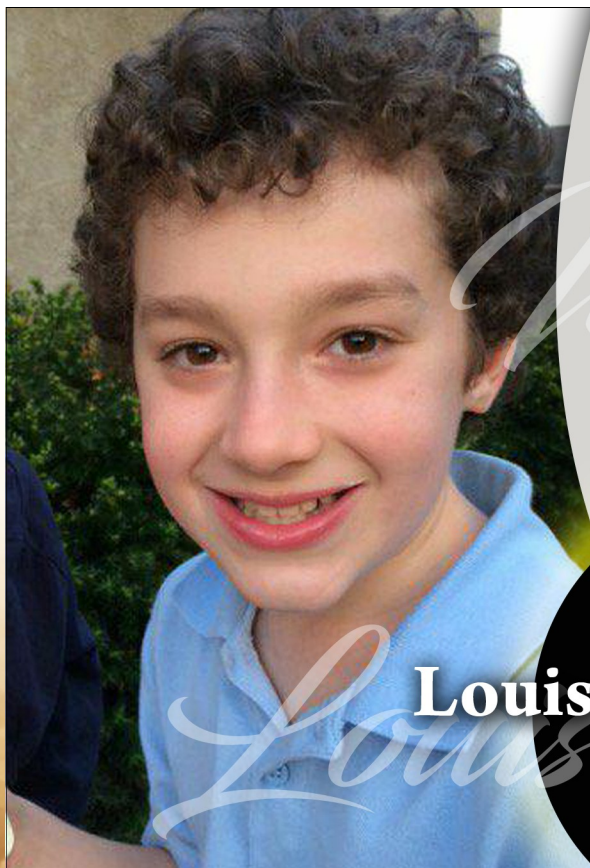
Deryl Wayne Cochran  
1949-2017



Tiffany Bush  
GRANDDAUGHTER



Essence Foster  
GRANDDAUGHTER



30daysofcancer.com  
#universelouie

*In Memory*  
IN MEMORY OF OUR  
LIFE AND LIGHT

*Love,*  
Mom & Dad

*Louis*  
**Louis Samuel Becker**

11 April 2005  
22 August 2016

# Standing in the Need of Prayer



**Mijiza Ashanti**  
MOTHER, GRANDMOTHER,  
GREAT GRANDMOTHER, CHURCH MOTHER  
Cancer Survivor, Twicel



**Tiffany M. Richardson**  
36 YEARS OLD  
Sickle Cell Survivor!  
Thank you for making my passion yours!

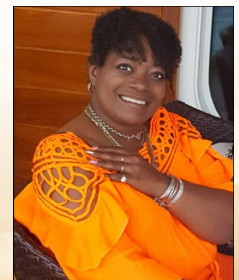


**Joanna D. Hogan**  
LIVING WITH SICKLE CELL

Born August 4, 1973 Joanna has been living with sickle cell since the age of 2. She never let sickle cell hold her back. She kept up with four older brothers by playing basketball until age 16 when doctors forced her to quit. She went on to earn a degree in nutrition. Joanna is a great mother and grandmother, being their girl scout troop leader, wrestling partner, friend or whatever they need her to be. Today Joanna continues to defy the odds by outliving the life expectancy given to her. In 2001, she started the Genesis St. Girls Club, a club created to keep girls active and prevent them getting in trouble. ♥



**Joanna S. Floyd**



**Stephani Francis**

JOANNA S. FLOYD  
STEPHANIE "GIT" FRANCIS  
ALICE MATLOCK  
SYLVIA SINGER

## WHAT IS SICKLE CELL DISEASE?

Sickle cell disease (SCD) is a disease of hemoglobin, a molecule that carries oxygen within red blood cells. In SCD, defective hemoglobin causes the red blood cells to become stiff instead of flexible and form a sickle or a crescent.

SCD is an inherited disease, meaning that the disease is passed on from parents to children through genes. Genes are instructions that tell the body how to make all the different substances the body needs to work properly. Since SCD is inherited, the disease is present at birth.

In SCD, a child inherits two defective hemoglobin genes (called hemoglobin S), one from each parent. This causes the body to make faulty hemoglobin. If a child inherits just one defective hemoglobin S gene, and the other hemoglobin gene is normal (hemoglobin A), he or she will have sickle cell trait, and will not have any SCD symptoms.

Crescent- or sickle-shaped red blood cells can get stuck in small blood vessels, blocking them. This keeps red blood cells and the oxygen they carry from getting to all parts of the body. Blocked blood flow can cause severe pain and organ damage. Complications of SCD can range from mild tiredness (fatigue) to more severe symptoms such as strokes, heart attacks, infections, and repeated episodes of severe pain.

In the United States, SCD affects about 70,000-100,000 people. It is most common among African Americans and Hispanics, according to the National Heart Blood and Lung Institute, but is also found in other ethnic and racial groups. Sickle cell anemia, where the patient inherited two hemoglobin S genes, is the most common form of sickle cell disease. There are variations of SCD where the patient inherits one hemoglobin S gene with another hemoglobin problem that results in a disease similar to classic SCD. ♥

# LipSense®

Long Lasting Liquid Lip Color



**Waterproof, Kiss-Proof, Smear-Proof**

color that won't dry your lips and won't come off until you take it off.

LipSense is the premier product from SeneGence International. This revolutionary lip color lasts up to **18 hours** with **3 layers** of LipSense. With over **60 shades** available and the ability to layer colors, you have **1000's** of custom color possibilities!

• NO WAX • NO LEAD • NO ANIMAL TESTING • GLUTEN-FREE

Use with **LipSense Moisturizing Gloss** Remove with **LipSense Ooops! Remover**  
Formulated with Shea butter + vitamin E for ultimate lip hydration.



Contact Your SeneGence Distributor And Try LipSense Today

CREATIVE URBAN LIVING SAYS

# Thanks



## First Merchants Bank

FOR YOUR SUPPORT

4TH ANNUAL BLACK TIE CHANDELIER GALA

SPECIAL THANKS TO

# bluemercury®

makeup • skincare • spa

Taking the worry out of your next event

# MO

**MO ENTERTAINMENT**  
EVENT PLANNING *and* COORDINATING



**614.233.1724**  
[www.moentertainment.biz](http://www.moentertainment.biz)



EASTON TOWN CENTER  
4141 EASTON LOOP E, COLUMBUS, OH 43219

4TH ANNUAL BLACK TIE CHANDELIER GALA



INDELIBLE AFFAIRS



*Let us bring the event of your dreams to life!*

Imagine your special event just the way you dreamed, without worry and indecision. Imagine every detail covered. Imagine having nothing to do - other than bask in the joy of your special day or event going just the way you envisioned. Indelible Affairs thrives to execute an impression-making event for clients looking for customized details that leave them and their guests speechless. Indelible Affairs offers unique design and event coordination that caters to your style and budget.

614.636.0311  
COLUMBUS, OHIO



# TWIG #110



CONGRATULATE

**BEA FOSTER**

and

CREATIVE URBAN LIVING, INCORPORATED

FOR A SUCCESSFUL

ANNUAL BLACK TIE CHANDELIER GALA

*A Special Thank You to*



## VILLA MILANO

BANQUET AND CONFERENCE CENTER

1630 Schrock Rd, Columbus, OH 43229

villamilano.com (614) 882-2058

CREATIVE URBAN LIVING, INC. SAYS  
THANK YOU TO

# The James



**THE OHIO STATE UNIVERSITY**  
COMPREHENSIVE CANCER CENTER



The James Cancer Hospital and Solove Research Institute is the patient-care component of The Ohio State University Comprehensive Cancer Center. Consistently ranked by *U.S. News & World Report* as one of the top hospitals in the nation for cancer care, The James is a transformational facility that fosters the collaboration and integration of cancer research and clinical cancer care. The James is the largest cancer hospital in the Midwest and the third largest in the nation.

460 West 10th Avenue  
Columbus, Ohio 43210  
800-293-5066 or 614-293-5066



# OHIO'S ONLY FULL SERVICE FUR SALON

Stop in to shop the largest selection of new and used fur coats, jackets, shearlings and leathers in Ohio.

## STORE, *CLEAN,* RECONDITION & REPAIR

Our full-service salon will recondition, glaze, repair and store your fur in our state-of-the-art, climate-controlled vaults.

## RESTYLE

Give that old fur a new look. Our expert furriers can update, reimagine and completely transform any out-of-style fur.

*The Fur Vault*  
EXCEPTIONAL OUTERWEAR

1140 Dublin Road  
Columbus, Ohio 43215

**614-486-7138**

[www.thefurvault.com](http://www.thefurvault.com)